

WORKSTATION LIFTING SYSTEMS

# THE RIGHT LIFTING SOLUTION FOR EVERY WORKSTATION



## ERGONOMY AND SAFETY THROUGH INNOVATION

**Konecranes is known globally for its technologically advanced lifting solutions for various industries and different environments. Our workstation lifting systems represent the wide scope of our expertise, from hand-held lifting tools to robust hoists with 20 tons of capacity.**

Workstation equipment has to be flexible in use and adaptable to changing production requirements and operating environments. Konecranes designs customizable lifting solutions that meet even the most demanding workstation needs.

All of our workstation lifting systems are designed with safety as paramount. The innovative design and ergonomic features help to ensure that the

operators can rely on their equipment and go home unharmed at the end of the shift. We also manufacture most of our products with suitability for hazardous environments.

The reliability of our lifting systems is supported by Konecranes global service organization, the largest in the industry. We have broad experience in our customers' processes, and we are committed to constantly learning more to help you raise your productivity even higher.

Konecranes workstation lifting systems support smooth, safe and efficient lifting for all kinds of loads.



The figures are based on estimates of The International Labor Organization, 2010.

**Workplace accidents are a major financial burden for employers and a serious health risk for employees. We have designed all our lifting equipment with safety and ergonomics foremost in mind to make our contribution to preventing work-related accidents and diseases.**

# RELIABLE LIFTING THROUGHOUT YOUR WHOLE PROCESS



1. CLX and SLX Electric Chain Hoists



2. XK-A Aluminum Workstation Crane



3. ATB AirBalancer



4. XK-S Steel Workstation Crane



5. Jib Crane



6. Manual products



7. Service



Extremely versatile and durable CLX and SLX hoists are ideal for demanding workstation use. Compact headroom, hook suspension and various other features provide necessary flexibility.



Electric Chain Hoists are available as EX products.

## CLX Electric Chain Hoist

### UP TO 5,000 KG OF LASTING LIFTING POWER

- 50% ED rating (up to FEM 3m) with 300 starts per hour
- Temperature monitoring and fan ventilation as standard
- Hoisting ambient temperature between -20 °C and +40 °C (-4 °F and +104 °F) as standard
- Less stress on the chain with new, patented chain drive
- Brake and slipping clutch prevent the load from dropping or micro-slipping
- Robust upper and lower limit switches are integrated into hoist body

### EASY SERVICEABILITY AND SIMPLE MAINTENANCE ACCESS MINIMIZES DOWNTIME

- Easy replacement of components with plug-in connections
- Improved safety with hoist limit switch, securing brake, and hook block
- Maintenance-free gearbox
- No special tools required for servicing the hoist
- Self-adjusting magnetic brake designed for the lifetime of the hoist
- IP55 protection against dust and water



reddot design award  
product design 2013

The CLX hoist series won the prestigious Red Dot Award for product design in 2013. An international design award created by Design Zentrum Nordrhein-Westfalen in Germany, it is one of the most sought after quality marks for excellent design.

## SLX Electric Chain Hoist

### A PERFECT CHOICE FOR DEMANDING USE

- All the CLX features and more
- Stepless hoisting speeds with inverter
- Shorter cycles with ESR
- Excellent for precise assembly work and sensitive parts handling

### EFFICIENCY AND SAFETY WITH ADVANCED TECHNOLOGY

- Electronic overload device and slack chain control
- Programmable limit switches
- Faster hoisting and lowering of partial loads with XSR
- Shock Load Absorption for reducing the effects of shock loads
- Clutch and brake supervision through pulse sensors for better safety

### CLX AND SLX KEY OPTIONS

- Voltages 208 to 575 in 50 and 60 Hz
- Self-locking hook
- Stainless steel hook and hook block
- Manual brake release
- Low headroom trolley
- Swiveling trolley
- Ambient temperature up to +50 °C (122 °F)

### CLX AND SLX ELECTRIC CHAIN HOISTS

|                                 | 02<br>CLX         | 05<br>CLX & SLX   | 10<br>CLX & SLX   | 16<br>CLX         | 25<br>CLX          |
|---------------------------------|-------------------|-------------------|-------------------|-------------------|--------------------|
| Min. speed <sup>1</sup> (m/min) | 2/1               | 1.3/0.32          | 0.7/0.16          | 0.7               | 0.7                |
| Max. speed <sup>2</sup> (m/min) | 20 (up to 125 kg) | 20 (up to 250 kg) | 20 (up to 500 kg) | 16 (up to 800 kg) | 20 (up to 1000 kg) |
| ESR <sup>3</sup> (m/min)        |                   | 32                | 32                |                   |                    |
| C-dimension <sup>4</sup> (mm)   | 409/461           | 445/506           | 537/607           | 567/693           | 611/761            |



<sup>1</sup> CLX/SLX <sup>2</sup> CLX with 50hz <sup>3</sup> ESR = Extended speed range for SLX <sup>4</sup> 1-fall / 2-fall with hook suspension (8 m/m)

Konecranes ATB AirBalancer utilizes pneumatic power for efficient, silent, and clean lifting operations. Combined with the aluminum workstation crane, they are environmentally friendly solutions to improve workstation efficiency.



## XK-A Aluminum Workstation Crane

### EXTREMELY LIGHT, EXTREMELY DURABLE

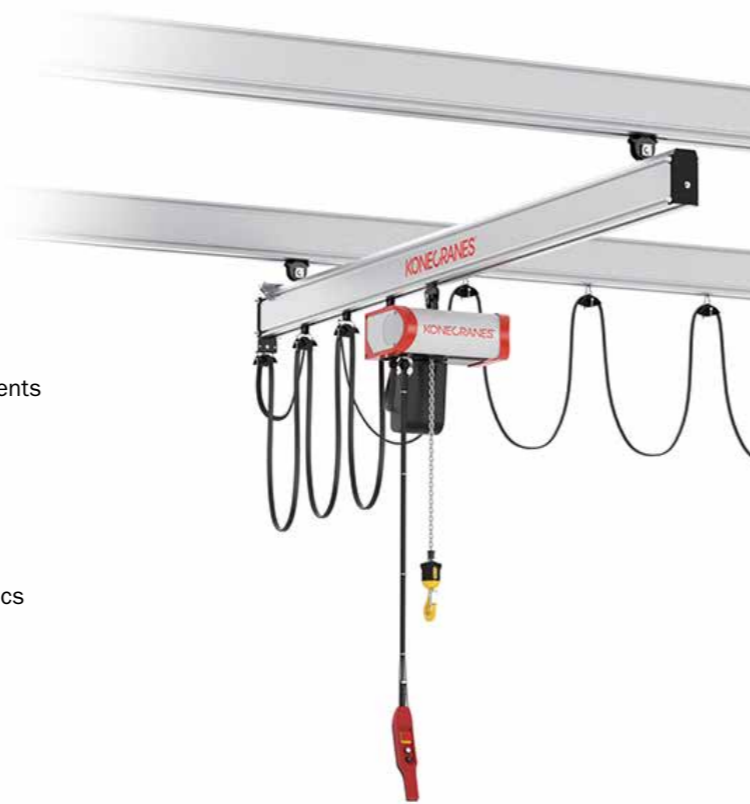
- Profiles enable easy extensions
- Load capacity up to 2,000 kg
- Anodized aluminum surface is optimal for clean environments
- Lighter than steel by up to 50%
- Smooth running on high-quality joint connections
- High quality profiles with lowest allowed tolerances

### SAFE AND ERGONOMIC OPERATIONS

- High structural stiffness and minimized dead weights
- Light weight and low rolling resistance improves ergonomics
- Short installation time, minimal maintenance required
- Lifetime protection against corrosion

### KEY OPTIONS

- 6 different profiles in 4 sizes available
- Different system configurations:
  - Monorails with straight profiles
  - Single and double girder
  - Articulated and rigid connection
  - Free-standing structure
  - Telescopic cranes
  - Installations for manipulator handling
  - Manual or motorized operation
- Service hatch for easy trolley inspection and maintenance
- Industry-specific safety features
- Optimized headroom solutions
- Variety of suspensions fitting to nearly all types of structures
- Energy supply via festoon or integrated conductor lines
- Motorized trolley for bridge and/or trolley



## ATB AirBalancer

### IMPROVED PRODUCTIVITY WITH SHORTER CYCLE TIMES

- Load capacity up to 350 kg, load weight compensation as standard
- Adjustable speeds up to 1.5 m/s, shorter cycle times
- Ergonomic 3-dimensional load movement without buttons or handles
- Extremely heavy-duty with 100% duty cycle
- Highly configurable to perfectly match the needed application

### YOUR LOADS WILL FEEL ALMOST WEIGHTLESS

- Great tool for assembling, packing, and manoeuvring items by hand
- Increased safety with centrifugal brake and wear-free overload protection
- Clean and quiet working environment due to power source
- Precise handling with a great variety of control systems and optional features

### KEY OPTIONS

- Baseload function to keep the air pressure at a safe level
- Load limiter function
- Proportional pushbutton control for precise positioning of varying loads
- Proportional inline-handle for buttonless positioning of varying loads
- Balancing control for predefined weights
- Balancing control with automatic load detection for varying weights
- Interlock function to prevent the release of the lifted load



| ATB                                       | ATB 70-2000B | ATB 120-2000B | ATB 120-3000B | ATB 160-2000B | ATB 225-1800B | ATB 350-1200B | ATB 350-2000B |
|---|--------------|---------------|---------------|---------------|---------------|---------------|---------------|
| Stroke (mm)                               | 2000         | 2000          | 3000          | 2000          | 1800          | 1200          | 2000          |
| Weight (kg)                               | 30           | 36            | 47            | 45            | 47            | 45            | 53            |
| SWL (kg) at 7 bar / 102 psi <sup>1)</sup> | 70           | 120           | 120           | 160           | 225           | 350           | 350           |

\* Max lifting capacity with 7 bar (102 psi) input pressure at the balancer piston, recommended work load max 75% of capacity.

Our Jib cranes and steel workstation cranes are durable solutions for various light material lifting needs. Steel workstation cranes also offer extra flexibility and adaptability to suit specific tasks and facilities.



Jib cranes are available as EX products.



## XK-S Steel Workstation Crane

### FOR HEAVY-DUTY OPERATIONS

- Weld-free modular system is easy to install, modify and extend
- Long suspension distances minimize steel structures and reduce overall costs
- Load capacity up to 2,000 kg

### STRONG, DURABLE, MADE OF STEEL

- Increased productivity due to optimized working area below crane
- High-quality finish and unique hollow profile ensures smooth traveling
- Longer lifetime and reduced maintenance costs with dust and dirt protection
- Optimized wheels and high-quality bearings allow silent running

### KEY OPTIONS

- 7 different profiles in 5 sizes available
- Different system configurations:
  - Curved monorails with electrical and manual switches and turntables
  - Single and double girder
  - Articulated and rigid connection
  - Free-standing structure
  - Telescopic cranes
  - Installations for manipulator handling
  - Manual or motorized operation
- Service hatch for easy trolley inspection and maintenance
- Industry-specific safety features
- Optimized headroom solutions
- Variety of suspensions fitting to nearly all types of structures
- Energy supply via festoon or integrated conductor lines
- Motorized trolley for bridge and/or trolley



## Jib Crane

### ADJUSTABLE TO YOUR FACILITY

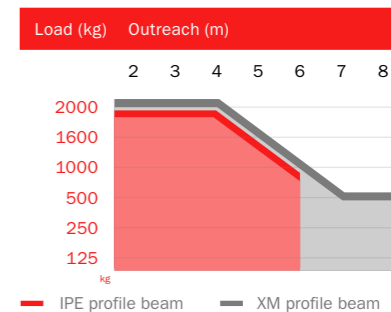
- Standard load capacity up to 2,000 kg
- Slews 270 degrees pillar-mounted and 180 wall-mounted
- Easy installation and relocation reduces downtime

### EXCELLENCE IN SAFETY

- Uncontrolled trolley and beam movements are minimized by the adjustable console bearing
- Main switch as a standard feature to optimize safety
- Several options for improved safety and usability:
  - Adjustable rotation stop with 10° increments
  - 3-position lock (-90°, 0°, +90°)
  - Different anchoring possibilities

### KEY FEATURES

- Steel hollow profile
  - High efficiency due to low weight, unique shape, and low friction wheels
  - Light construction reduces stress on structures
  - Excellent hook outreach dimension
  - Power-feeding flat cable under the profile
- IPE profile beam
  - Durable and robust solution combined with a festoon system on a galvanized c-track
  - Allows for very low headroom



When working in an environment where electricity is not available or impractical to use, Konecranes manual products are ready to do the lifting. They are an economical solution with wide load ranges and various features to enhance your work ergonomics.



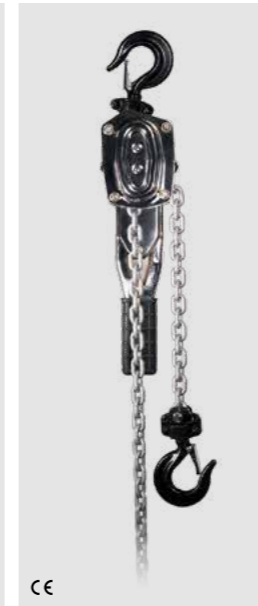
KM2 Hand Chain Block



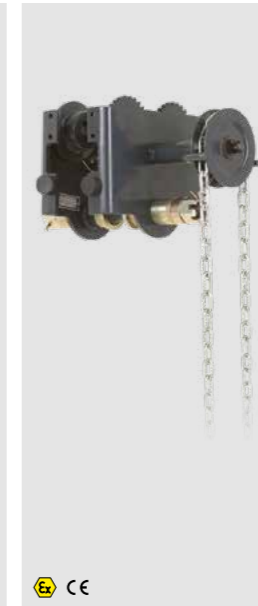
KMP Hand Chain Block



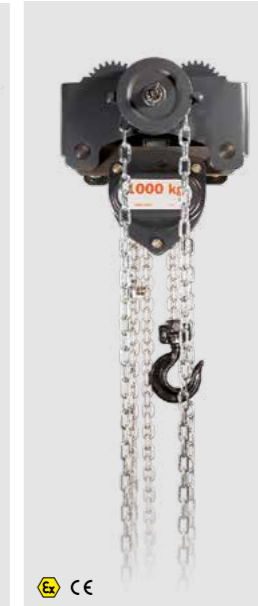
KL Lever Puller



KLP Lever Puller Heavy Duty



KPT &amp; KPTC Manual Trolleys



Low Headroom Trolley



## Manual products

### DURABLE MANUAL HOISTS PACKED WITH FEATURES

- European, galvanized grade 80 alloy steel load chain
- Stainless steel chains and hook and chain collector as options
- Rugged construction featuring a steel gear case and hand wheel cover
- Totally enclosed brake provides protection against dirt
- Dual pawl Weston-style brake with two friction discs, 4 braking surfaces

#### KM2 Hand Chain Block

- Smooth and efficient operations with machined chain sprocket and gears
- Rugged construction featuring a steel gear case and hand wheel cover

#### KMP Hand Chain Block

- Torque limiter as overload device
- One extra bearing to support the load wheel

### KL Lever Puller

- Ideal for e.g. construction, maintenance, and service
- 360° handle rotation and rubber grip
- Lifting mechanism can be released when unloaded

### KLP Lever Puller Heavy Duty

- Compact and lightweight design
- 360° handle rotation and 15° handle recovery
- Open chain path for simple inspection and cleaning
- Smooth free-wheel feature for easy chain adjustment
- Machined chain sprocket ensures efficient operation
- High strength, grade 100 alloy steel load chain
- Available only in US

### VERSATILE MANUAL TROLLEYS FOR DEMANDING USE

- Trolley plates in high resistance steel
- Designed for both manual and electrical hoists
- Wider flanges available

### KPT & KPTC Manual Trolleys

- Easily adjustable for a wide range of flange widths up to 310 mm
- Safety drop lugs and rubber bumpers included
- Wheel ball bearings are sealed and maintenance-free

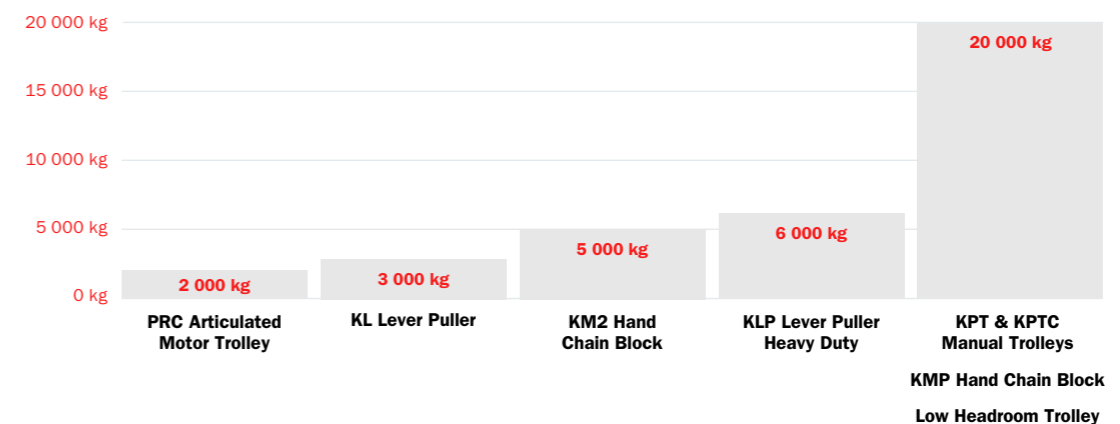
### Low Headroom Trolley

- Galvanized hand chain-driven trolley
- Adjustable according to beam width up to 305 mm
- Optimized headroom
- Push trolleys available as options

### PRC ARTICULATED MOTOR TROLLEY

- Span of up to 12 meters
- Designed for electrically powered articulated sliding girders

### LOAD CAPACITIES





## SERVICE TAILORED TO YOUR NEEDS

### IMPROVING YOUR SAFETY AND PERFORMANCE

All of our service solutions aim to give you the optimal package of services to help increase the productivity of your business in various ways. We help to minimize the total cost of ownership while increasing productivity, reliability and operator safety.

### THE INDUSTRY'S LEADING SERVICE NETWORK

A commitment to excellent, proactive, and real-time service is one of the strategic priorities of Konecranes. With over 600 service locations in almost 50 countries, we have the largest service network in the industry and provide high-quality service 24/7. Konecranes continuously evolves its service offering by adding research and development on top of over 60 years of maintenance expertise.

### GLOBAL PRESENCE WITH LOCAL SUPPORT

We make it happen locally and globally with our skilled people, backed by equipment manufacturer competence and world-class tools. Konecranes services over 30,000 companies throughout the world, with over 430,000 items of equipment in our maintenance contract base.




This publication is for general informational purposes only. Konecranes reserves the right at any time, without notice, to alter or discontinue the products and/or specifications referenced herein. This publication creates no warranty on the part of Konecranes, express or implied, including but not limited to any implied warranty or merchantability or fitness for a particular purpose.





Konecranes is a world-leading group of Lifting Businesses™, serving a broad range of customers, including manufacturing and process industries, shipyards, ports and terminals. Konecranes provides productivity enhancing lifting solutions as well as services for lifting equipment of all makes. In 2016, Group (comparable combined company) sales totaled EUR 3,278 million. The Group has 17,000 employees at 600 locations in 50 countries. Konecranes class A shares are listed on the Nasdaq Helsinki (symbol: KCR).

© 2017 Konecranes. All rights reserved. 'Konecranes', 'Lifting Businesses' and , 'CXT', 'SMARTON' and 'TRUCONNECT' are either registered trademarks or trademarks of Konecranes Global Corporation.